



## lluminate Live! V8

### Participant Quick Reference Guide

lluminate Live!® is a world-class, real-time training, demonstration and collaboration environment that is powerful, flexible, and easy to use. Elluminate's collaboration environment enables the delivery of live, online learning, training, coaching, mentoring, and meeting. Effectiveness is increased by engaging participants with the ability to talk over the Internet (with full, 2-way audio), exchange text messages, display live video, share whiteboards, multimedia files, and applications—all in one intuitive, graphical interface. Whether the environment is hosted by Elluminate or installed on your server, it is easy to set up, easy to use, and customizable.

Unlike the Internet, Elluminate Live! is built specifically for live, multi-media collaboration. Our unique Collaborative Communications Framework (CCF) automatically ensures that everything is in the right place at the right time. Whether you have a dial-up modem or a high-speed LAN, you get the same superior quality, high performance, and dependability—with no lag time or garbled communication. So you can focus on content, not technology.

---

© 2007 Elluminate Inc. All Rights Reserved


For more information visit: [www.lluminate.com](http://www.lluminate.com)

### Tips on Participating in an Elluminate Live! Session

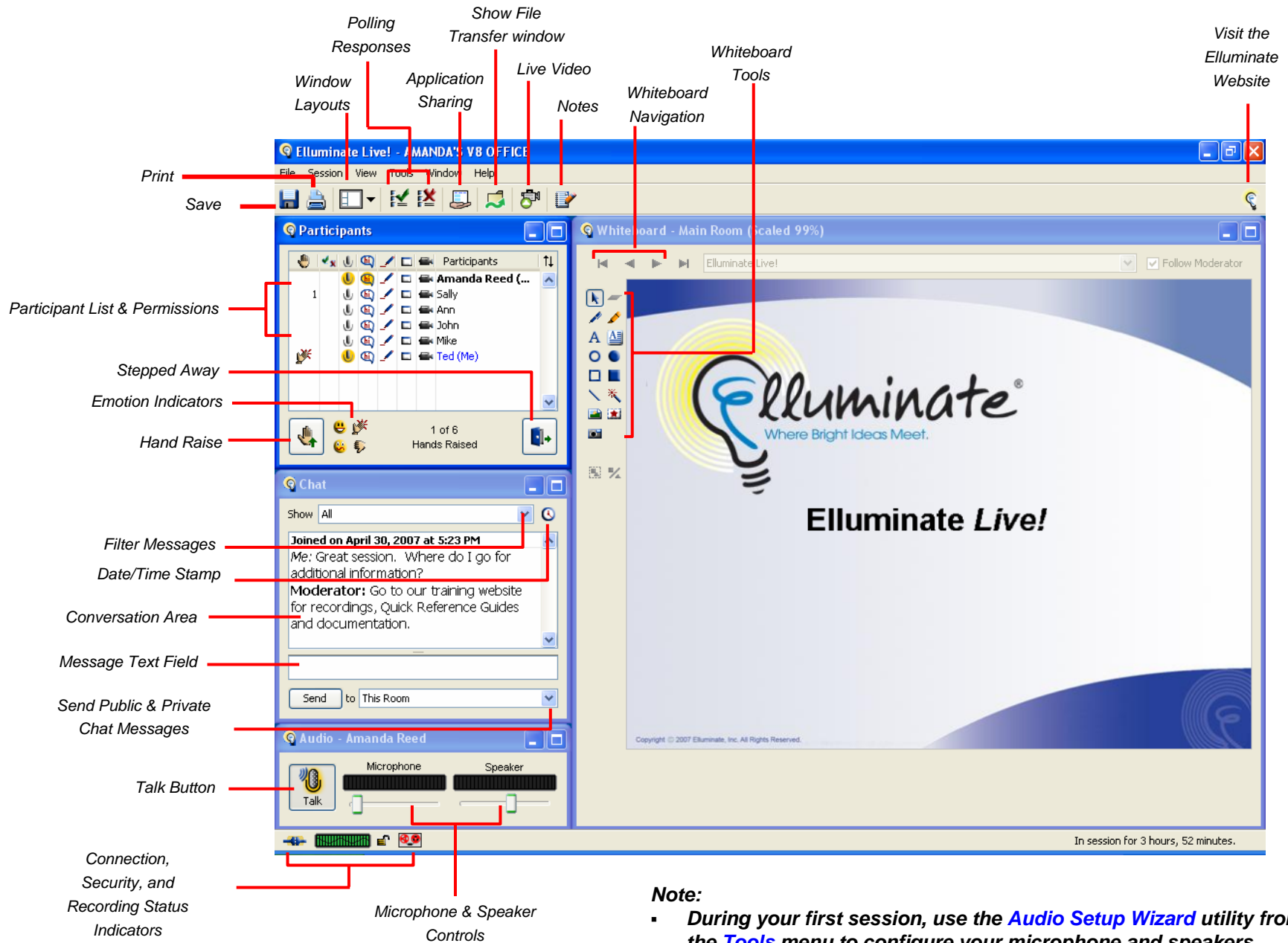
#### Preparation

- Find a comfortable place with no distractions.
- Ensure that your audio is working correctly prior to your session.
- Take the Elluminate Live! Online Orientation or refer to the Elluminate Live! Participant Guide for information on all the features prior to your first session. This information and more is available from Elluminate's Training Web page at <http://www.lluminate.com/support/training>.

#### In-Session

- Be sure to join the session 5 – 10 minutes prior to the start.
- Set your Connection Speed to the Internet.
- Use the Audio Setup Wizard to test your microphone and speakers.
- Participate in the session by responding to polls and providing feedback to the moderator.
- Raise your hand  when you have a question or a comment.
- Use Chat to send text messages to other participants and the moderator during the session.
- Remember that running other applications on your computer can slow your connection to Elluminate Live!

# Participant Quick Reference Guide



## Note:

- **During your first session, use the [Audio Setup Wizard](#) utility from the **Tools** menu to configure your microphone and speakers.**
- **Some features may not be available depending on your version of Elluminate Live! and configuration**