

Attachment to the Georgia Year 4 Annual Performance Report

1. **Objective 1.1/2 and 2.1. – Implementation of scientifically based reading, math, and dropout prevention programs/strategies.**
2. **Objective 1.3 – Increased reading and math skills because of the use of scientifically based reading, math, and dropout prevention programs/strategies.**
3. **Objective 1.4 - Increase parent/family engagement in Cohort schools implementing scientifically based reading, math, and dropout prevention programs/strategies.**
4. **Objective 1.5/2.2 – Infusion of scientifically based reading, math, and dropout prevention programs/strategies into preservice training programs.**

Table 1. Cohort 1 Schools by District and GLRS Region – Year 4.

GLRS Region	School District	High School	Middle School	Middle School
Coastal	Liberty County	Liberty County High School	Midway Middle School	Lewis Frazier Middle School
Southeast Georgia	No Applications Received			
East Georgia	Richmond County	Laney High School	W.S Hornsby Middle School	
East Central	Baldwin County	Baldwin County High School	Oak Hill Middle School	
Metro East	Gwinnett County	North Gwinnett High School	Lanier Middle School	
Metro West	Atlanta Public Schools	Douglass High School	Harper-Archer Middle School	
Metro South	Henry County	Henry County High School	Henry County Middle School	
West Central	Meriwether County Schools	Manchester High School	Manchester Middle School	
Middle Georgia	Bibb County	Rutland High School	Rutland Middle School	
North Georgia	Continuing Project from FY 2007			
North Central	Murray County	Murray County High School	Bagley Middle School	Gladden Middle School

GLRS Region	School District	High School	Middle School	Middle School
Northeast	Madison County	Madison County High School	Madison County Middle School	
Northwest				
Southwest	Decatur County	Bainbridge County High School	Hutto Middle School	Bainbridge Middle School
South Georgia				
South Central	Coffee County	Coffee Co. HS	Coffee Co. Middle School	
West Georgia	Muscogee County		Double Churches Middle School	

Table 2. Cohort 2 Schools by District and GLRS Region – Year 4.

GLRS Region	School District	High School	Middle School
Coastal Area	Effingham County	Effingham County High School	
Southeast Georgia	Appling County	Appling County High School	
	Evans County	Claxton High School	Claxton Middle School
	Toombs County	Tombs County High	
East Georgia	Richmond County	Josey Comprehensive High School	
	Richmond County	Cross Creek High School	
	Richmond County	Glenn Hills High School	
East Central	Bleckley County	Bleckley County High School	Bleckley Middle School
	Laurens County	East Laurens High School	
	Laurens County	West Laurens High School	
	Wilkinson County	Wilkinson County High School	
Metro East	Gwinnett County		Snellville Middle School
	Gwinnett County	Berkmar High School,	
	Gwinnett County		Sweetwater Middle School
	Gwinnett County	Central Gwinnett High School	Richards Middle School
	Gwinnett County	Parkview High School	
	Gwinnett County	South Gwinnett High School	

GLRS Region	School District	High School	Middle School
Metro West	Clayton County	North Clayton High School	
	Clayton County	Jonesboro High School	
	Marietta City	Marietta High School	
Metro South	Pike County	Pike County High School	
	Spalding County	Griffin High School	
	Thomaston-Upson County	Upson Lee High School	Upson Lee Middle School
West Central			
Middle Georgia	Bibb County	Central High School	
	Bibb County	Howard High School	
	Twiggs County	Twiggs County High School	Twiggs County Middle School
North Georgia	Dawson County	Dawson County High School	
	Franklin County	Franklin County High School	
	Hall County	East Hall High School	
	Hart County	Hart County High School	
	Stephens County	Stephens County High School	
North Central	Fannin County		Fannin County Middle School
	Gilmer County	Gilmer High School	
	Murray County	North Murray High School	
Northeast Georgia	Clarke County	Cedar Shoals High School	
	Clarke County	Clarke Central High School	Clarke Middle School
	Clarke County		Burney-Harris-Lyons

GLRS Region	School District	High School	Middle School
			Middle School
	Elbert County	Elbert County Comprehensive High School	
Northwest	Catoosa County	Ringgold High School	
	Catoosa County	Lakeview Ft. Oglethorpe High School	
	Dade County	Dade County High School	
Southwest	Dougherty County Schools	Dougherty High School	
	Dougherty County Schools	Albany High School	
	Dougherty County Schools	Monroe High School	
	Thomasville City Schools	Thomasville High	
South Georgia			
South Central	Brantley County	Brantley County High School	Brantley County Middle School
	Charlton County	Charlton County High School	
	Pierce County	Pierce County High School	Pierce County Middle School
West Georgia	Chattahoochee County	Chattahoochee County High School	
	Muscogee County	William Henry Spencer High School	Fort Middle School
	Muscogee County	Kendrick High School	
	Muscogee County	Hardaway High School	

Table 3. Cohort 3 Schools by District and GLRS Region – Year 4.

GLRS Region	County	High School	Middle School
Coastal Area			
Southeast Georgia	Wayne County	Wayne County High School	Martha Puckett Middle School
East Georgia	Columbia County	Harlem High School	
	Warren County	Warren County High School	
	Jenkins County	Jenkins High School	
East Central	Putnam County	Putnam County High School	
	Oconee GNETS		
Metro East	Gwinnett County	Meadowcreek High School	Trickum Middle School
	Gwinnett County	Lanier High School	
	Gwinnett County	Shiloh High School	
Metro West	Forsyth County	South Forsyth High School	
Metro South			
West Central	Carroll County	Central High School	
	Carrollton City	Carrollton High School	Temple Middle School
Middle Georgia	Monroe County	Mary Persons High School	
	Bibb County	Elam Alexander GNETS	Ballard-Hudson Middle School
	Houston County	Houston County Crossroads Center	

GLRS Region	County	High School	Middle School
	Houston County	Houston County High School	Warner-Robins Middle School
	Crawford County	Crawford County High School	Howard Middle School
	Crawford County		Crawford County Middle School
North Georgia	Hart County		Hart County Middle School
	Mountain Education Center: Gainesville City Hart County Habersham County	Mountain Education Center Gilmer	
		Mountain Education Center Habersham	
		Mountain Education Center Pickens	
		Mountain Education Center Lumpkin	
		Mountain Education Center Stephens	
		Mountain Education Center Union	
	Gainsville City	Gainsville High School	
	Habersham County	Habersham Central High School	
	Banks County	Banks County High school	Banks County Middle School
North Central	Fannin County	Fannin County High School	
Northeast Georgia			
Northwest	Floyd County		Coosa Middle School
	Haralson County	Haralson County High School	Haralson County Middle School
	Polk County		Cedartown Middle School
	Dade County		Dade County Middle School

GLRS Region	County	High School	Middle School
Southwest	Dougherty County		Dougherty County Middle School
	Dougherty County		Robert A. Cross Magnet Middle School
	Dougherty County		Southside Middle School
	Dougherty County		Albany Middle School
	Dougherty County		Radium Springs Magnet Middle School
	Dougherty County		Merry Acres Middle School
	Grady County	Cairo High School	
	Lee County	Lee County High School	
	Worth County	Worth County High School	
South Georgia			
South Central	Charlton County		Bethune Middle School
	Atkinson County	Atkinson County High School	
West Georgia	Muscogee County		Veterans Memorial Middle School
	Randolph County	Randolph Clay High School	

Table 3. Program Improvement Areas Selected by Cohort I Participating Schools.

GLRS Region/ Schools	Academic Engagement		Behavior Engagement		Psychological Engagement	Cognitive Engagement	Community & Family Engagement	Transition	Policy & Procedures
Coastal									
Liberty County HS	Co-teaching, tutoring, test prep	X			School Climate Mentoring	Career Ed, Credit Recovery	X		
Midway MS	Co-teaching	X				Career	X		
Lewis Frazier MS	Co-teaching in math, test prep, Sat. tutoring	Trans-Math					X		Increase Minutes for Math
East GA									
Laney HS				PBS	Advisement		X		
W.S Hornsby MS				PBS			X		
East Central									
Baldwin HS	Co-teaching	DI GLISI	X	PBS	Mentoring	Career Planning	X (Bus)	x	X
Oak Hill MS	Co-teaching	DI	X	PBS	Mentoring	Self Advocacy, Career Planning	X (Bus)	X	X

GLRS Region/ Schools	Academic Engagement		Behavior Engagement		Psychological Engagement	Cognitive Engagement	Community & Family Engagement	Transition	Policy & Procedures
Metro East									
North Gwinnett HS	Course Completion Tutoring	X		BIP ABC	Clubs, mentoring, Expectations 101	Credit Recovery, Careers, CTAE	X	Student Led IEPs	Watchlist
Lanier MS			Behavior Rewards		Advisement Program, Mentoring		X		Risk Indicators Protocol, Vertical Planning
Metro South									
Henry HS	Math Tutoring, ALEKS, Math coach	DI Math Strategies, Tier IV interventions	X			Study Skills	X		
Henry MS	Math Tutoring, ALEKS, Co- teaching	DI, Math Strategies, Tier IV Interven- tions	X			Study Skills	X		
Metro West									
Douglass HS	SLC Tutoring		X				X		Scheduling for SLC
Harper	Tutoring		X		Mentoring	Study skills			

GLRS Region/ Schools	Academic Engagement		Behavior Engagement		Psychological Engagement	Cognitive Engagement	Community & Family Engagement	Transition	Policy & Procedures
Archer MS			Incen- tives				X		
Middle GA									
Rutland HS	Reading, SBC, Co- teaching	Reading Lab, Progress Monitor			Partners Club, Mentoring	Self Determinatio n	X		9 th grade redesign
Rutland MS	Success Maker Math Lab, SBC for math, Benchmark Assess- ments, Co- teaching	Model Drawing Pblm- Solving Strategies	X			Self Determinatio n	Math Day & Math Nights		
North Central									
Murray HS			X	Behav Incen- tives		Self Advocacy, Career Education	X		
Bagley MS				Class	Club,				Health

GLRS Region/ Schools	Academic Engagement		Behavior Engagement		Psychological Engagement	Cognitive Engagement	Community & Family Engagement	Transition	Policy & Procedures
				Mgt	Mentoring		X		Plans
Gladden MS	Successmaker Renaissance Math/Science	DI Math/Sci	X				X		X
Northeast									
Madison HS			X	PBS	Mentoring		X		X
Madison MS	Connections Class Academic Support	Struggling Readers, Progress Monitor			Clubs		X		
Northwest									
LaFayette HS			X			High School 101			Risk Indicators
LaFayette MS	Tutoring, Co-teaching		X	Behav Expect			X		
South Central									
Coffee HS	Math, Tutoring, Internet Café, Co- teaching,			Disc	Mentoring	Credit Recovery	X		
Coffee MS	Tutoring, SAIL, REACH	DI Math	X	Disc	Mentoring		X		

GLRS Region/ Schools	Academic Engagement		Behavior Engagement		Psychological Engagement	Cognitive Engagement	Community & Family Engagement	Transition	Policy & Procedures
South GA									
Cook HS			X		School Climate, Clubs, Caring Adult		X	X	
Cook MS	Connections Rdg/Math	Progress Monitor	X		Clubs		X	X	
Southwest									
Bainbridge HS			X		Teen Pregnancy Program		X		
West Bainbridge	A3 Program, remediation classes	DI	X				X		
Hutto MS	Tutoring, technology lab, Accelerated Rdg	LFS, CRISS strategies	X		Mentoring	Study Skills	X		Modified Schedules
West Central									
Manchester HS	Tutoring				Mentoring, Addressing Student Needs		X	X Person Centered Planning	
West GA									
Jordan HS	Co-teaching		X	PBS			X		Schedules

GLRS Region/ Schools	Academic Engagement		Behavior Engagement		Psychological Engagement	Cognitive Engagement	Community & Family Engagement	Transition	Policy & Procedures
Double Churches MS	Co-teaching, Tutoring		X	PBS			X		Watchlist

Table 4. Program Improvement Areas Selected by Cohort 2 Participating Schools.

School/GLRS Region	Improvement Area
Northwest GLRS/Renee Mixon	
Catoosa County	
Ringgold High School	Affective
Lakeview Ft. Oglethorpe High School	Affective
Chattooga County	
Dade County	
Dade County High School	Affective
North Central GLRS/ (Joyce Christian)	
Fannin County	
Fannin County Middle School	Academic
Gilmer County	
Gilmer High School	Affective and Academic
Murray County	
North Murray High School	Affective and Behavior
North Georgia GLRS/ (Faith Huff)	
Dawson County	
Dawson County High School	Math
Franklin County	
Franklin County High School	Affective
Hall County	
East Hall High School	Math
Hart County	
Hart County High School	Affective
Stephens County	
Stephens County High School	Affective
Metro West GLRS/ (Billie Talley Browne)	
Clayton County	
North Clayton High School	Affective
Jonesboro High School	Affective
Marietta City	
Marietta High School	Math
Metro East GLRS/ (Fran Bay)	
Gwinnett County	
Snellville Middle	Math
Berkmar High School	Math
Berkmar Middle School	Math
Sweetwater Middle School	Math
Central Gwinnett High School	Math

School/GLRS Region	Improvement Area
Richards Middle School	Math
Parkview High School	Math
South Gwinnett High School	Math
Northeast Georgia GLRS/ (Jennifer Leahy)	
Clarke County	
Cedar Shoals High School	Affective
Clarke Middle School	Affective
Burney-Harris-Lyons Middle School	Math
Performance Learning Center	Behavior
Clarke Central High School	Affective
Elbert County	
Elbert County Comprehensive High School	Affective/C.A.F.E.s/ASPIRE
West Central GLRS/1 (Kathy Corley)	
Carroll County	
Villa Rica High School	Behavior
METRO South GLRS/5 (Kathy Corley)	
Pike County	
Pike County High School	Math
Spalding County	
Griffin High School	Behavior
Thomaston-Upson County	
Upson Lee High School	Affective
Upson Lee Middle School	Math
Middle Georgia GLRS/ (Patricia Swartz)	
Bibb County	
Northeast Health Science Magnet High School	Affective
Central High School	Behavior
Howard High School	Affective
Jones County	
Jones County High School	Affective
Twiggs County	
Twiggs County Middle School	Math
East Central GLRS/ (Tara Powell)	
Laurens County	
East Laurens High School	Math
East Laurens Middle School	Math
West Laurens Middle School	Math
Wilkinson County	
Wilkinson County High School	Math
East Georgia GLRS/ (Emma Whitters)	
Richmond County	

School/GLRS Region	Improvement Area
T.W. Josey Comprehensive	Math
Cross Creek High School	Behavior
Glenn Hills High School	Behavior
West Georgia GLRS/ (Roy Westbrook)	
Chattahoochee County	
Chattahoochee County High School	Attendance
Muscogee County	
William Henry Spencer High School	Math
Fort Middle School	Math
Kendrick High School	Math
West Georgia GLRS	
None	
Hardaway High School	Math
East Central GLRS/ (Tara Powell)	
Bleckley County	
Bleckley Middle School	Math
Bleckley County High School	Math
Southeast Georgia GLRS/ (Judi Kelley)	
Appling County	
Appling County High School	Attendance
Evans County	
Claxton High School	Affective
Claxton Middle School	Math/Engagement
Toombs County	
Tombs County High	Math/Engagement
Coastal Area GLRS/ (Judi Kelley)	
Effingham County	
Effingham County High School	Student Engagement
Southwest GLRS/ (Pat McCaskill)	
Dougherty County Schools	
Dougherty High School	Affective/Attendance
Albany High School	Affective
Monroe High School	Affective
Thomasville City School	
Thomasville High	Affective
South Georgia GLRS/ (Kathy Reinhardt)	
Brooks County	
Brooks County High School	Behavior
Irwin County	
Irwin County High School	Behavior
South Central GLRS/ (Paulette Taylor)	

School/GLRS Region	Improvement Area
Brantley County	
Brantley County High School	Math
Brantley County Middle School	Math
Charlton County	
Charlton County High School	Math
Pierce County	
Pierce County Middle School	Math
Pierce County High School	Math

Table 5. Program Improvement Areas Selected by Cohort 3 Participating Schools.

School/GLRS Region	Improvement Area
Northwest GLRS/Renee Mixon	
Haralson County	
Haralson County High School	Math
Coosa Middle School	Math
Haralson County Middle School	Attendance
Polk County	
Cedartown Middle School	Attendance
Dade County	
Dade county Middle School	Math
North Central GLRS/ (Joyce Christian)	
Fannin County	
Fannin County High School	Academic and Attendance
North Georgia GLRS/ (Faith Huff/Jennifer Leahy)	
Habersham County	
Haberson Central High School	Affective
Gainsville City	
Gainsville High School	Behavior
Banks County	
Banks County High School	Affective
Banks County Middle School	Affective
Hart County	
Hart County Middle School	Behavior
Mountain Education Centers	
Mountain Education Gilmer	Affective
Mountain Education Habersham	Affective
Mountain Education Pickens	Affective
Mountain Education Lumpkin	Affective
Mountain Education Stephens	Affective
Mountain Education Union	Affective
4 Metro West GLRS/ (Billie Talley Browne)	
Forsyth County	
South Forsyth High School	Academic Engagement
Metro East GLRS/ (Fran Bay)	
Gwinnett County	
Meadowcreek High School	Math
Lanier High School	Engagement
Shilow High School	Math
Trickum Middle School	Engagement

School/GLRS Region	Improvement Area
Northeast Georgia GLRS/ (Jennifer Leahy)	
West Central GLRS/1 (Kathy Corley)	
Carroll County	
Central High School	Math
Carrollton County	
Carrollton High School	Math
Temple Middle School	Math
METRO South GLRS/5 (Kathy Corley)	
Middle Georgia GLRS/ (Patricia Swartz)	
Monroe County	
Mary Persons High School	Cognitive Engagement
Crawford County	
Crawford County High School	Affective Engagement
Crawford County Middle School	Academic Engagement/Math
Houston County	
Houston County Crossroads	Behavioral Engagement
Houston County High School	Affective Engagement
Warner Robins Middle School	Academic Engagement/Math
Bibb County	
Ballard-Hudson Middle School	Math
Howard Middle School	Math
Elam Alexander GNETS	Cognitive Engagement
East Central GLRS/ (Tara Powell)	
Putnan County	
Putnam County High School	Attendance
Oconee GNETS	Behavior
East Georgia GLRS/ (Emma Whitters)	
Columbia County	
Harlem High School	Graduation Rate (Attendance)
Warren County	
Warren County High School	Math
Jenkins County	
Jenkins County High School	Math
West Georgia GLRS/ (Roy Westbrook)	
Randolph County	
Randolph Clay High School	Math
Muscogee County	
Veterans Memorial High School	Math
Southeast Georgia GLRS/ (Judi Kelley)	

School/GLRS Region	Improvement Area
Wayne County	
Wayne County High School	Attendance, Behavior, Family Engagement, and Academics
Martha Puckett Middle School	Math
Coastal Area GLRS/ (Judi Kelley)	
Southwest GLRS/ (Pat McCaskill)	
Dougherty County Schools	
Dougherty Middle School	Math
Southside Middle School	Math
Albany Middle School	Math
Radium Spring Magnet Middle School	Math
Merry Acres Middle School	Math
Lee County	
Lee County High School	Behavior
Grady County	
Cairo High School	Academics and Improving Grades
Worth County	
Worth County High School	Inclusion Students and All 9 th Graders
Robert A. Cross Magnet Middle School	Math
South Georgia GLRS/ (Kathy Reinhardt)	
South Central GLRS/ (Claire Smith)	
Atkinson County	
Atkinson County High School	Math
Charlton County	
Bethune Middle School	Math

Table 6. Performance Measure 1/2.g – Graduation with a Regular Diploma in Cohort I Schools – Percent Change from Baseline to Baseline to 2009-2010.

Cohort 1 - All Students:

School	2005-2006	2006-2007	2007-2008	2008-2009	2009-2010	Average Baseline	Percent Change
Baldwin HS	58.3%	56.9%	67.0%	69.7%	77.0%	60.7%	16.3%
Coffee HS	60.9%	60.4%	61.6%	68.8%	73.7%	61.0%	12.7%
Murray Co HS	63.2%	57.4%	62.1%	70.8%	77.6%	60.9%	16.7%
Manchester HS	54.8%	64.6%	60.0%	73.5%	80.3%	59.8%	20.5%
Rutland HS	62.9%	51.1%	64.1%	64.5%	67.0%	59.4%	7.6%
Bainbridge HS	69.7%	70.4%	76.3%	70.0%	77.3%	72.1%	5.2%
Henry County HS	69.5%	67.3%	70.6%	77.2%	76.1%	69.1%	7.0%
Liberty County HS	75.4%	73.3%	73.0%	77.0%	80.1%	73.9%	6.2%
Lucey Laney HS	37.3%	45.7%	30.9%	56.6%	62.9%	38.0%	24.9%
Madison Co HS	69.4%	65.5%	62.6%	69.1%	74.4%	65.8%	8.6%
North Gwinnett HS	79.2%	86.3%	85.4%	85.3%	86.0%	83.7%	2.3%
Douglass HS	80.3%	87.8%	83.0%	83.2%	77.7%	83.7%	-6.0%
				Average	75.8%	65.7%	+10.2%

Cohort 1 - Students with Disabilities:

School	2005-2006	2006-2007	2007-2008	2008-2009	2009-2010	Average Baseline	Percent Change
Baldwin HS	22.9%	29.6%	27.4%	22.9%	31.7%	26.6%	5.1%
Coffee HS	21.6%	14.3%	16.4%	17.0%	19.6%	17.4%	2.2%
Manchester HS	14.6%	26.9%	28.3%	28.6%	46.4%	23.3%	23.1%
Rutland HS	5.0%	13.5%	14.7%	16.7%	19.2%	11.1%	8.1%
Bainbridge HS	13.2%	17.9%	11.4%	20.5%	23.8%	14.2%	9.6%
Henry County HS	34.6%	25.0%	35.5%	58.6%	51.4%	31.7%	19.7%
Liberty County HS	28.6%	34.4%	27.8%	32.6%	42.9%	30.3%	12.6%
Lucey Laney HS	11.5%	13.0%	8.7%	0.0%	31.6%	11.1%	20.5%
Madison Co HS	34.2%	30.0%	33.9%	35.5%	40.0%	32.7%	7.3%
North Gwinnett HS	27.4%	47.4%	62.2%	35.7%	64.2%	45.7%	18.5%
Douglass HS	9.4%	20.0%	19.2%	20.0%	11.4%	16.2%	-4.8%
				Average	34.0%	24.1%	+9.8%

Table 7. Performance Measure 1/2.g – Graduation with a Regular Diploma in Cohort 2 Schools – Percent Change from Baseline to 2009-2010.

Cohort 2 - All Students:

School	2006-2007	2007-2008	2008-2009	2009-2010	Average Baseline	Percent of Change
Albany HS	60.6%	53.3%	63.5%	78.9%	57.0%	22.0%
Appling County HS	67.3%	67.9%	79.1%	80.2%	67.6%	12.6%
Berkmar HS	70.7%	73.0%	77.5%	77.5%	71.9%	5.7%
Bleckley County HS		74.1%	83.2%	77.9%	74.1%	3.8%
Brantley County HS	65.4%	61.4%	67.9%	71.3%	63.4%	7.9%
Cedar Shoals HS	58.1%	62.2%	61.4%	70.4%	60.2%	10.3%
Central HS	61.7%	59.9%	67.2%	59.3%	60.8%	-1.5%
Central Gwinnett HS	74.3%	71.1%	75.9%	80.7%	72.7%	8.0%
Charlton County HS	67.3%	65.1%	80.6%	83.7%	66.2%	17.5%
Chattahoochee County HS	NA	NA	91.4%	86.5%	91.4%	-4.9%
Clarke Central HS	63.6%	69.3%	68.7%	71.4%	66.5%	5.0%
Claxton HS	64.5%	71.6%	77.5%	67.7%	68.1%	-0.3%
Cross Creek HS	60.8%	69.2%	75.0%	77.7%	65.0%	12.7%
Dade County HS	73.7%	83.1%	75.9%	77.4%	78.4%	-1.0%
Dawson County HS	78.3%	79.2%	85.1%	84.8%	78.8%	6.0%
Dougherty HS	31.0%	49.5%	72.2%	76.5%	40.3%	36.3%
East Hall HS	59.1%	74.2%	77.3%	88.8%	66.7%	22.2%
East Laurens HS	65.5%	66.8%	68.3%	71.4%	66.2%	5.3%
Effingham County HS	72.3%	74.2%	77.8%	79.8%	73.3%	6.6%
Elbert County Comprehensive HS	61.8%	61.8%	68.2%	74.2%	61.8%	12.4%

School	2006-2007	2007-2008	2008-2009	2009-2010	Average Baseline	Percent of Change
Franklin County HS		68.3%	68.7%	72.1%	68.3%	3.8%
Gilmer County/GCHS	76.2%	85.1%	88.0%	87.9%	80.7%	7.3%
Glenn Hills HS	77.5%	59.9%	67.3%	78.5%	68.7%	9.8%
Griffin HS	46.6%	58.7%	62.6%	65.2%	52.7%	12.6%
Hardaway HS	75.6%	86.0%	92.0%	90.1%	80.8%	9.3%
Hart County HS	69.4%	80.3%	77.0%	75.1%	74.9%	0.3%
Howard HS			New School	New School	NA	NA
Jonesboro HS		79.1%	76.4%	81.0%	79.1%	1.9%
Josey Comprehensive HS	57.8%	46.2%	63.3%	71.3%	52.0%	19.3%
Kendrick HS	61.0%	65.8%	66.9%	63.0%	63.4%	-0.4%
Lakeview Fort Oglethorpe HS	69.2%	69.60%	75.10%	76.80%	69.4%	7.4%
Marietta HS		77.8%	83.7%	80.5%	38.9%	41.6%
Monroe HS	62.0%	68.7%	75.5%	78.9%	65.4%	13.6%
North Clayton HS		77.3%	76.2%	78.5%	77.3%	1.2%
North Murray HS	57.4%	62.1%	70.8%	77.6%	59.8%	17.9%
Parkview HS	89.7%	89.8%	90.8%	91.3%	89.8%	1.6%
Pierce County HS	67.4%	71.8%	84.4%	87.1%	69.6%	17.5%
Pike County HS	73.6%	76.6%	81.0%	87.8%	75.1%	12.7%
Ringghold HS	70.5%	74.1%	75.5%	78.0%	72.3%	5.7%
South Gwinnett HS	80.1%	78.1%	78.6%	80.9%	79.1%	1.8%
Stephens County HS	66.8%	72.3%	78.6%	83.0%	69.6%	13.5%
Thomasville HS	62.0%	60.8%	74.9%	72.7%	61.4%	11.3%
Toombs County HS	72.2%	66.0%	74.6%	72.9%	69.1%	3.8%
Twiggs County HS		55.4%	69.6%	83.1%	55.4%	27.7%
Upson-Lee HS	65.0%	73.2%	73.1%	70.4%	69.1%	1.3%
West Laurens HS	71.3%	76.7%	77.6%	81.3%	74.0%	7.3%

School	2006-2007	2007-2008	2008-2009	2009-2010	Average Baseline	Percent of Change
Wilkinson County HS		79.6%	75.0%	79.0%	79.6%	-0.6%
William Henry Spencer HS	53.7%	56.1%	69.2%	67.1%	54.9%	12.2%
			Average	77.6%	68.1%	9.5%

Cohort 2 - Students with Disabilities:

	2006-2007	2007-2008	2008-2009	2009-2010	Average Baseline	Percent of Change
Albany HS	16.1%	5.6%	28.6%	41.4%	29.6%	11.8%
Appling County HS	37.1%	25.0%	50.0%	47.6%	29.6%	18.0%
Berkmar HS	35.5%	23.8%	36.0%	41.9%	29.6%	12.3%
Bleckley County HS		39.1%	45.5%	37.0%	39.1%	-2.1%
Brantley County HS	22.7%	15.2%	28.2%	28.1%	29.6%	-1.5%
Cedar Shoals HS	15.2%	19.7%	11.3%	21.1%	29.6%	-8.5%
Central HS	13.0%	11.1%	13.3%	17.1%	29.6%	-12.5%
Central Gwinnett HS	41.4%	36.8%	52.1%	47.5%	29.6%	17.9%
Charlton County HS	28.6%	14.3%	33.3%	NA	NA	NA
Chattahoochee County HS	NA	NA	Too Few	50.0%	29.6%	20.4%
Clarke Central HS	25.4%	20.0%	26.8%	31.0%	29.6%	1.4%
Claxton HS	25.3%	37.5%	50.0%	36.8%	29.6%	7.2%
Cross Creek HS	16.2%	17.6%	18.2%	35.3%	29.6%	5.7%
Dade County HS	40.0%	38.5%	25.0%	47.6%	29.6%	18.0%
Dawson County HS	36.0%	33.0%	75.0%	64.7%	29.6%	35.1%
Dougherty Comprehensive HS	4.3%	5.6%	0.0%	11.8%	29.6%	-17.8%

	2006-2007	2007-2008	2008-2009	2009-2010	Average Baseline	Percent of Change
East Hall HS	15.2%	13.3%	Too Few	45.5%	29.6%	15.9%
East Laurens HS	17.6%	25.0%	29.0%	41.0%	29.6%	11.4%
Effingham County HS	26.8%	34.0%	28.3%	56.4%	29.6%	26.8%
Elbert County Comprehensive HS	21.2%	28.9%	28.6%	26.1%	29.6%	-3.5%
Franklin County HS		23.1%	31.3%	30.0%	23.1%	6.9%
Gilmer County/GCHS	20.0%	40.0%	46.7%	55.0%	29.6%	25.4%
Glenn Hills HS	53.6%	25.0%	37.0%	37.0%	29.6%	7.4%
Griffin HS	12.5%	16.9%	19.7%	27.3%	29.6%	-2.3%
Hardaway HS	24.3%	66.7%	90.9%	72.7%	29.6%	43.1%
Hart County HS	28.0%	25.9%	19.0%	34.8%	29.6%	5.2%
Howard HS			New School	New School	NA	NA
Jonesboro HS		35.5%	27.3%	32.0%	35.5%	-3.5%
Josey Comprehensive HS	34.0%	23.4%	27.9%	45.7%	28.7%	17.0%
Kendrick HS	16.2%	21.7%	20.0%	25.0%	29.6%	-4.6%
Lakeview Fort Oglethorpe HS	31.6%	42.1%	41.9%	35.5%	29.6%	5.9%
Marietta HS		38.5%	47.2%	42.9%	38.5%	4.4%
Monroe HS	15.6%	5.3%	5.3%	43.8%	29.6%	14.2%
North Clayton HS		25.0%	21.7%	21.4%	25.0%	-3.6%
North Murray HS	20.6%	31.6%	20.0%	25.5%	29.6%	-4.1%
Parkview HS	64.9%	70.0%	63.0%	53.7%	29.6%	24.1%
Pierce County HS	35.9%	42.9%	52.8%	58.1%	29.6%	28.5%
Pike County HS	20.0%	47.8%	31.8%	52.4%	29.6%	22.8%
Ringghold HS	24.5%	44.2%	46.9%	60.5%	29.6%	30.9%
South Gwinnett HS	62.2%	37.9%	37.0%	50.0%	29.6%	20.4%
Stephens County HS	26.3%	37.2%	48.8%	24.2%	29.6%	-5.4%
Thomasville HS	13.6%	11.8%	30.0%	Too Few	29.6%	NA

	2006-2007	2007-2008	2008-2009	2009-2010	Average Baseline	Percent of Change
Toombs County HS	20.7%	14.3%	18.2%	23.5%	29.6%	-6.1%
Twiggs County HS		13.6%	7.7%	36.4%	13.6%	22.8%
Upson-Lee HS	33.3%	40.4%	29.2%	27.7%	29.6%	-1.9%
West Laurens HS	13.6%	35.0%	50.0%	28.6%	29.6%	-1.0%
Wilkinson County HS		40.0%	35.0%	28.6%	40.0%	-11.4%
William Henry Spencer HS	18.2%	25.0%	51.2%	34.1%	29.6%	4.5%
			Average	38.5%	29.7.0%	8.8%

Table 8. Performance Measure1/2.h – Dropout Rates in Cohort I High Schools for Students with and Without Disabilities – Percent Change from Baseline to 2009-2010.

Cohort 1 - All Students:

School	2005- 2006	2006-2007	2007-2008	2008-2009	2009-2010	Average Baseline	Percent Change
Baldwin HS	9.1%	7.1%	3.5%	3.0%	NA	6.6%	NA
Coffee HS	7.5%	7.2%	6.4%	7.0%	6.9%	7.0%	-0.1%
Murray Co HS	6.7%	7.6%	7.6%	3.5%	1.8%	7.3%	-5.5%
Manchester HS	7.8%	3.2%	2.1%	1.7%	1.6%	4.4%	-2.8%
Rutland HS	9.5%	9.0%	6.1%	7.3%	9.0%	8.2%	0.8%
Bainbridge HS	6.3%	5.5%	4.0%	3.5%	3.5%	5.3%	-1.8%
Henry County HS	6.1%	8.0%	6.0%	4.2%	5.9%	6.7%	-0.8%
Liberty County HS	4.7%	4.6%	5.2%	2.3%	2.4%	4.8%	-2.4%
Lucey Laney HS	14.1%	14.9%	7.3%	8.2%	3.9%	12.1%	-8.2%

School	2005-2006	2006-2007	2007-2008	2008-2009	2009-2010	Average Baseline	Percent Change
Madison Co HS	8.3%	7.6%	6.1%	5.4%	4.8%	7.3%	-2.5%
North Gwinnett HS	2.9%	3.0%	2.1%	2.8%	1.9%	2.7%	-0.8%
Douglass HS	0.8%	2.0%	3.4%	3.3%	4.6%	2.1%	2.5%
				Average	4.2%	6.2%	-2.0%

Cohort 1 - Students with Disabilities:

School	2006-2006	2006-2007	2007-2008	2008-2009	2009-2010	Average Baseline	Percent Change
Baldwin HS	15.2%	11.3%	4.1%	5.8%	4.7%	10.2%	-5.5%
Coffee HS	9.2%	11.6%	8.2%	16.0%	11.6%	9.7%	1.9%
Murray Co HS	8.5%	10.0%	10.9%	5.6%	2.3%	9.8%	-7.5%
Manchester HS	10.8%	4.6%	1.9%	3.1%	1.0%	5.8%	-4.8%
Rutland HS	16.3%	10.1%	9.5%	16.0%	9.5%	12.0%	-2.5%
Bainbridge HS	8.1%	10.4%	7.8%	9.8%	4.2%	8.8%	-4.6%
Henry County HS	6.3%	8.1%	11.2%	11.2%	8.2%	8.5%	-0.3%
Liberty County HS	7.2%	4.7%	7.8%	4.8%	5.8%	6.6%	-0.8%
Lucey Laney HS	5.1%	17.6%	5.6%	10.9%	4.2%	9.4%	-5.2%
Madison Co HS	12.0%	9.5%	4.1%	7.3%	5.2%	8.5%	-3.3%
North Gwinnett HS	3.1%	5.0%	2.7%	6.1%	4.2%	3.6%	0.6%
Douglass HS	2.0%	3.2%	10.0%	8.7%	7.2%	5.1%	2.1%
				Average	5.7%	8.2%	-2.5%

Table 9. Performance Measure1/2.h – Dropout Rates in Cohort 2 High Schools for Students with Disabilities – Percent Change from Baseline to 2009-2010.

Cohort 2 - All Students:

	2006-2007	2007-2008	2008-2009	2009-2010	Average Baseline	Percent of Change
Albany HS	9.4%	6.9%	2.3%	3.8%	8.2%	-4.4%
Appling County HS	5.3%	5.0%	4.1%	3.5%	5.2%	-1.7%
Berkmar HS	2.5%	3.7%	3.0%	3.3%	3.1%	0.2%
Bleckley County HS	NA	4.2%	4.5%	5.2%	4.2%	1.0%
Brantley County HS	6.7%	7.4%	6.3%	6.7%	7.1%	-0.4%
Cedar Shoals HS	7.8%	6.4%	6.3%	2.7%	7.1%	-4.4%
Central HS	6.9%	7.1%	7.2%	8.0%	7.0%	1.0%
Central Gwinnett HS	3.4%	3.5%	3.8%	3.7%	3.5%	0.3%
Charlton County HS	3.8%	3.8%	2.3%	1.0%	3.8%	-2.8%
Chattahoochee County HS	1.6%	1.4%	4.0%	3.9%	1.5%	2.4%
Clarke Central HS	6.8%	7.7%	5.3%	3.0%	7.3%	-4.3%
Claxton HS	5.9%	5.4%	5.6%	4.2%	5.7%	-1.5%
Cross Creek HS	5.9%	2.3%	4.2%	4.6%	4.1%	0.5%
Dade County HS	4.0%	4.3%	3.7%	4.2%	4.2%	0.1%
Dawson County HS	4.5%	3.9%	3.5%	2.6%	4.2%	-1.6%
Dougherty HS	3.7%	5.0%	4.0%	5.4%	4.4%	1.1%
East Hall HS		0.5%	0.9%	0.0%	0.5%	-50.0%
East Laurens HS	4.1%	6.10%	5.1%	4.8%	5.1%	-0.3%
Effingham County HS	4.6%	3.5%	3.3%	2.5%	4.1%	-1.6%
Elbert County Comprehensive HS	7.0%	7.0%	6.3%	1.6%	7.0%	-5.4%
Franklin County HS	7.6%	5.2%	4.3%	3.6%	6.4%	-2.8%

	2006-2007	2007-2008	2008-2009	2009-2010	Average Baseline	Percent of Change
Gilmer County/GCHS	2.3%	1.2%	1.4%	1.6%	1.8%	-0.2%
Glenn Hills HS	4.3%	0.6%	6.6%	0.6%	2.5%	-1.9%
Griffin HS	9.0%	6.9%	5.4%	3.2%	8.0%	-4.8%
Hardaway HS	1.1%	1.1%	3.3%	2.3%	1.1%	1.2%
Hart County HS	4.8%	3.5%	2.8%	1.4%	4.2%	-2.8%
Howard HS			4.5%	5.5%	4.5%	1.0%
Jonesboro HS		1.4%	5.6%	5.5%	1.4%	4.1%
Josey Comprehensive HS	9.7%	2.9%	1.7%	2.0%	6.3%	-4.3%
Kendrick HS	6.9%	6.4%	4.7%	4.8%	6.7%	-1.9%
Lakeview Fort Oglethorpe HS	6.4%	4.7%	2.9%	1.6%	5.6%	-4.0%
Marietta HS		2.9%	3.0%	6.0%	2.9%	3.1%
Monroe HS	2.9%	4.7%	2.8%	2.9%	3.8%	-0.9%
North Clayton HS		1.4%	5.2%	5.7%	1.4%	4.3%
North Murray HS	7.6%	7.6%	3.5%	1.8%	7.6%	-5.8%
Parkview HS	2.2%	1.7%	1.4%	1.5%	2.0%	-0.5%
Pierce County HS	5.0%	1.4%	3.6%	3.5%	3.2%	0.3%
Pike County HS	2.9%	2.3%	2.3%	2.2%	2.6%	-0.4%
Ringghold HS	4.9%	5.5%	2.7%	1.4%	5.2%	-3.8%
South Gwinnett HS	3.3%	3.8%	3.4%	3.2%	3.6%	-0.4%
Stephens County HS	6.4%	1.9%	1.0%	2.0%	4.2%	-2.2%
Thomasville HS	5.1%	7.0%	6.6%	5.2%	6.1%	-0.9%
Toombs County HS	4.8%	4.1%	3.5%	4.2%	4.5%	-0.3%
Twiggs County HS		2.7%	0.5%	2.1%	2.7%	-0.6%
Upton-Lee HS	4.8%	6.0%	5.9%	3.3%	5.4%	-2.1%
West Laurens HS	4.5%	3.5%	3.2%	2.5%	4.0%	-1.5%
Wilkinson County HS		1.7%	4.8%	9.4%	1.7%	7.7%
William Henry Spencer	8.6%	2.5%	1.5%	4.5%	5.6%	-1.1%

	2006-2007	2007-2008	2008-2009	2009-2010	Average Baseline	Percent of Change
HS						
			Average	3.5%	4.4%	-1.9%

Cohort 2 - Students with Disabilities:

School	2006-2007	2007-2008	2008-2009	2009-2010	Average Baseline	Percent of Change
Albany HS	9.0%	1.5%	3.6%	5.8%	5.3%	0.6%
Appling County HS	9.1%	10.3%	5.0%	5.1%	9.7%	-4.6%
Berkmar HS	3.2%	5.2%	5.0%	4.0%	4.2%	-0.2%
Bleckley County HS	NA	6.3%	9.0%	11.1%	6.3%	4.8%
Brantley County HS	10.8%	7.6%	9.3%	7.1%	9.2%	-2.1%
Cedar Shoals HS	9.3%	7.3%	10.6%	4.3%	8.3%	-4.0%
Central HS	7.7%	16.8%	10.5	10.1%	12.3%	-2.2%
Central Gwinnett HS	4.4%	4.9%	4.5%	3.6%	4.7%	-1.1%
Charlton County HS	6.8%	11.0%	7.4%	0.0%	8.9%	-8.9%
Chattahoochee County HS	2.0%	0.0%	3.7%	4.1%	1.0%	3.1%
Clarke Central HS	8.6%	10.0%	6.1%	3.0%	9.3%	-6.3%
Claxton HS	7.7%	9.1%	5.3%	5.9%	8.4%	-2.5%
Cross Creek HS	9.6%	5.7%	7.2%	5.6%	7.7%	-2.1%
Dade County HS	3.5%	6.8%	5.2%	6.0%	5.2%	0.8%
Dawson County HS	7.9%	7.9%	9.0%	5.9%	7.9%	-2.0%
Dougherty HS	3.6%	6.9%	5.3%	7.1%	5.3%	1.9%
East Hall HS		0.0%	0.8%	0.0%	0.0%	0.0%
East Laurens HS	7.2%	12.2%	5.5%	8%	9.7%	-1.7%
Effingham County HS	6.8%	3.8%	4.7%	1.40%	5.3%	-3.9%

School	2006-2007	2007-2008	2008-2009	2009-2010	Average Baseline	Percent of Change
Elbert County Comprehensive HS	9.1%	9.8%	10.5%	3.6%	9.5%	-5.9%
Franklin County HS	1.5%	11.9%	7.7%	8.6%	6.7%	1.9%
Gilmer County/GCHS	3.8%	3.2%	4.1%	2.3%	3.5%	-1.2%
Glenn Hills HS	7.5%	2.8%	5.8%	0.5%	5.2%	-4.7%
Griffin HS	14.9%	8.6%	9.4%	7.1%	11.8%	-4.7%
Hardaway HS	0.1%	1.9%	4.9%	1.9%	1.0%	0.9%
Hart County HS	8.3%	3.8%	5.5%	5.1%	6.1%	-1.0%
Howard HS			2.7%	7.7%	2.7%	5.0%
Jonesboro HS		1.8%	6.4%	7.5%	1.8%	5.7%
Josey Comprehensive HS	9.5%	2.7%	1.8%	2.0%	6.1%	-4.1%
Kendrick HS	7.7%	6.5%	7.8%	7.3%	7.1%	0.2%
Lakeview Fort Oglethorpe HS	9.4%	6.8%	6.9%	3.4%	8.1%	-4.7%
Marietta HS		5.7%	3.0%	8.5%	5.7%	2.8%
Monroe HS	1.9%	4.6%	2.4	6.3%	3.3%	3.1%
North Clayton HS		2.9%	9.9%	6.6%	2.9%	3.7%
North Murray HS	10.0%	10.9%	5.6%	2.3%	10.5%	-8.2%
Parkview HS	5.2%	4.4%	2.8%	3.3%	4.8%	-1.5%
Pierce County HS	4.4%	2.3%	5.0%	6.9%	3.4%	3.6%
Pike County HS	2.1%	2.1%	7.2%	4.5%	2.1%	2.4%
Ringghold HS	10.2%	8.3%	3.1%	3.4%	9.3%	-5.9%
South Gwinnett HS	3.4%	5.4%	4.0%	5.8%	4.4%	1.4%
Stephens County HS	10.6%	2.9%	3.1%	4.7%	6.8%	-2.1%
Thomasville HS	8.2%	9.8%	12.5%	3.2%	9.0%	-5.8%
Toombs County HS	4.5%	5.6%	3.5%	7.8%	5.1%	2.8%
Twiggs County HS		1.3%	1.5%	0.0%	1.3%	-1.3%
Upson-Lee HS	7.1%	13.2%	9.4%	7.1%	10.2%	-3.1%

School	2006-2007	2007-2008	2008-2009	2009-2010	Average Baseline	Percent of Change
West Laurens HS	5.4%	4.7%	4.1%	4.1%	5.1%	-1.0%
Wilkinson County HS		1.4%	4.8%	9.4%	1.4%	8.0%
William Henry Spencer HS	9.3%	3.6%	2.5%	8.3%	6.5%	1.9%
			Average	5.2%	6.0%	-0.9%

Table 10. Performance Measure 1/2.i – Attendance Rates by Students with Disabilities (More Than 15 Days) in Cohort I Middle and High Schools – Percent Change from Baseline to 2009-2010.

Cohort I Middle Schools:

	2005-2006	2006-2007	2007-2008	2008-2009	2009-2010	Average Baseline	Percent Change
Bagley MS	21.3%	13.6%	9.0%	12.0%	10.1%	14.6%	-4.5%
Bainbridge MS	25.7%	20.3%	20.3%	10.0%	15.3%	22.1%	-6.8%
Coffee MS	10.4%	9.4%	14.6%	9.5%	13.4%	11.5%	1.9%
Double Churches MS	23.3%	20.0%	24.5%	20.0%	13.2%	22.6%	-9.4%
Gladden MS	13.3%	21.1%	15.0%	6.0%	17.2%	16.5%	-2.1%
Harper-Archer MS	47.3%	27.5%	22.0%	9.7%	7.7%	32.3%	0.7%
Henry MS	11.4%	11.4%	8.0%	5.9%	2.5%	10.3%	-24.6%
Hutto MS	8.9%	11.7%	16.5%	7.0%	13.9%	12.4%	-7.8%
Lanier MS	12.7%	8.9%	6.7%	9.3%	10.1%	9.4%	1.5%
Lewis Frazier MS	11.4%	10.2%	13.7%	16.2%	11.2%	11.8%	0.7%
Madison Co MS	21.0%	22.6%	13.8%	16.1%	24.2%	19.1%	-0.6%
Manchester MS	4.0%		4.3%	3.8%	2.9%	2.8%	5.1%
Midway MS	12.9%	6.7%	19.6%	19.6%	25.0%	13.1%	0.1%

	2005-2006	2006-2007	2007-2008	2008-2009	2009-2010	Average Baseline	Percent Change
Oak Hills MS	18.4%	14.6%	13.8%	10.9%		15.6%	11.9%
Rutland MS	40.8%	32.4%	26.6%	18.4%	23.9%	33.3%	-2.9%
W.S. Hornsby MS	12.2%	19.4%	13.8%	24.6%		15.1%	-9.4%
				Average	13.5%	16.4%	-2.9%

Cohort I High Schools:

School	2005- 2006	2006-2007	2007-2008	2008-2009	2009-2010	Average Baseline	Percent Change
Baldwin HS	36.8%	33.3%	29.6%	25.8%	23.0%	33.2%	-10.2%
Coffee HS	32.6%	34.1%	39.9%	37.1%	37.0%	35.5%	1.5%
Murray Co HS	26.8%	23.9%	0.4%	2.3%	23.7%	17.0%	6.9%
Manchester HS	23.7%	12.7%	20.6%	13.8%	12.6%	19.0%	-6.4%
Rutland HS	39.2%	31.1%	39.2%	32.1%	31.4%	36.5%	-5.1%
Bainbridge HS	28.8%	29.2%	35.6%	33.9%	26.3%	31.2%	-4.9%
Henry County HS	34.6%	34.5%	26.3%	21.1%	15.9%	31.8%	-15.9%
Liberty County HS	22.7%	29.2%	27.8%	27.5%	31.6%	26.6%	5.0%
Lucey Laney HS	27.3%	28.7%	29.2%	43.6%	39.5%	28.4%	11.1%
Madison Co HS	37.3%	38.2%	33.7%	31.3%	23.6%	36.4%	-12.8%
North Gwinnett HS	23.5%	16.7%	17.6%	19.6%	21.5%	19.3%	2.2%
Douglass HS	35.5%	39.8%	46.5%	51.8%	49.7%	40.6%	9.1%
				Average	28.0%	29.6%	-1.6%

Table 11. Performance Measure 1/2.i – Attendance Rates by Students with Disabilities (More Than 15 Days) in Cohort 2 Middle and High Schools – Percent Change from Baseline to 2009-2010.

Cohort 2 Middle Schools:

	2006-2007	2007-2008	2008-2009	2009-2010	Average Baseline	Percent Point Change
Bleckley MS	20.0%	17.9%	25.0%	27.8%	19.0%	8.9%
Brantley County MS	18.4%	16.9%	14.5%	17.4%	17.7%	-0.3%
Burney Harris Lyons MS	18.4%	11.4%	7.9%	5.9%	14.9%	-9.0%
Clarke MS	12.7%	18.5%	12.9%	13.1%	15.6%	-2.5%
Claxton MS	9.2%	6.7%	79.0%	6.8%	8.0%	-1.2%
Fannin MS	7.6%	7.6%	10.6%	7.5%	7.6%	-0.1%
Fort MS	17.5%	13.9%	12.5%	5.1%	15.7%	-10.6%
Pierce County MS	9.1%	6.5%	3.2%	8.1%	7.8%	0.3%
Richards MS	13.0%	13.1%	10.6%	13.1%	13.1%	0.1%
Snellville MS	15.4%	11.7%	11.3%	18.4%	13.6%	4.9%
Sweetwater MS	14.4%	11.9%	11.4%	13.6%	13.2%	0.5%
Twiggs County MS		4.9%	1.6%	18.8%	4.9%	13.9%
Upton Lee MS	18.1%	10.6%	6.9%	6.4%	14.4%	-8.0%
			Average	9.0%	9.9%	-0.2%

Cohort 2 High Schools:

	2006-2007	2007-2008	2008-2009	2009-2010	Average Baseline	Percent of Change
Albany HS	24.8%	36.6%	28.6%	20.9%	30.7%	-9.8%
Appling County HS	35.1%	14.4%	17.3%	20.4%	24.8%	-4.4%
Berkmar HS	21.9%	27.8%	32.3%	34.7%	24.9%	9.9%
Bleckley County HS	NA	17.9%	23.8%	22.2%	17.9%	4.3%
Brantley County HS	3.4%	20.7%	29.5%	26.5%	12.1%	14.5%
Cedar Shoals HS	33.8%	33.7%	29.8%	28.3%	33.8%	-5.5%
Central HS	34.5%	32.3%	34.5%	22.3%	33.4%	-11.1%
Central Gwinnett HS	21.4%	18.9%	19.7%	26.5%	20.2%	6.4%
Charlton County HS	28.3%	29.3%	6.8%	14.0	28.8%	-14.8%
Chattahoochee County HS	13.7%	8.1%	14.3%	24.5%	10.9%	13.6%
Clarke Central HS	35.9%	25.6%	24.7%	23.8%	30.8%	-7.0%
Claxton HS	23.1%	19.0%	28.0%	25.0%	21.1%	4.0%
Cross Creek HS	32.5%	39.7%	28.9%	37.5%	36.1%	1.4%
Dade County HS	26.7%	21.4%	31.3%	31.0%	24.1%	7.0%
Dawson County HS		31.5%	22.0%	32.4%	31.5%	0.9%
Dougherty HS	19.6%	33.7%	34.7%	37.6%	26.7%	11.0%
East Hall HS		28.2%	25.2%	24.6%	28.2%	-3.6%
East Laurens HS	15.2%	18.9%	13.6%	16.8%	17.1%	-0.2%
Effingham County HS	13.5%	16.3%	19.3%	30.0%	14.9%	15.1%
Elbert County Comprehensive HS	30.8%	32.6%	38.1%	32.5%	31.7%	0.8%
Franklin County HS		29.3%	30.6%	20.4%	29.3%	-8.9%
Gilmer County/GCHS	25.9%	27.3%	18.4%	21.7%	26.6%	-4.9%

	2006-2007	2007-2008	2008-2009	2009-2010	Average Baseline	Percent of Change
Glenn Hills HS	23.6%	40.1%	39.2%	33.1%	31.9%	1.3%
Griffin HS	34.1%	31.9%	30.6%	39.1%	33.0%	6.1%
Hardaway HS	18.1%	16.8%	21.3%	33.0%	17.5%	15.6%
Hart County HS	7.5%	9.6%	2.4%	8.4%	8.6%	-0.1%
Howard HS			33.6%	25.9%	33.6%	-7.7%
Jonesboro HS		40.4%	29.4%	31.8%	40.4%	-8.6%
Josey Comprehensive HS	29.2%	33.8%	30.0%	46.5%	31.5%	15.0%
Kendrick HS	26.1%	23.6%	27.5%	24.3%	24.9%	-0.6%
Lakeview Fort Oglethorpe HS	26.8%	19.6%	16.0%	31.3%	23.2%	8.1%
Marietta HS		32.8%	30.8%	27.7%	32.8%	-5.1%
Monroe HS	24.3%	25.5%	20.4%	24.6%	24.9%	-0.3%
North Clayton HS		38.2%	38.7%	44.4%	38.2%	6.2%
North Murray HS	23.9%	0.4%	2.3%	23.9%	12.2%	11.8%
Parkview HS	20.0%	16.4%	17.3%	22.7%	18.2%	4.5%
Pierce County HS	21.2%	17.8%	13.3%	21.6%	19.5%	2.1%
Pike County HS	17.0%	21.1%	20.7%	16.9%	19.1%	-2.2%
Ringghold HS		33.10%	18.5%	31.0%	33.1%	-2.1%
South Gwinnett HS	21.40%	23.80%	25.8%	27.1%	22.6%	4.5%
Stephens County HS	22.3%	20.7%	5.8%	30.1%	21.5%	8.6%
Thomasville HS	30.6%	19.6%	31.3%	26.6%	25.1%	1.5%
Toombs County HS	29.7%	18.5%	24.6%	25.9%	24.1%	1.8%
Twiggs County HS	28.7%	15.2%	14.7%	27.6%	22.0%	5.7%
Upson-Lee HS	NA	38.3%	30.0%	27.0%	38.3%	-11.3%
West Laurens HS	23.2%	20.5%	2.5%	24.4%	21.9%	2.6%
Wilkinson County HS		10.8%	28.6%	35.80%	10.8%	25.0%

	2006-2007	2007-2008	2008-2009	2009-2010	Average Baseline	Percent of Change
William Henry Spencer HS	35.40%	39.80%	40.10%	34.35%	37.6%	-3.3%
			Average	27.5%	25.4%	2.0%

Table 12. Performance Measure 1/2j – Standards in English/Language Arts in Cohort I Middle and High Schools – Percent Change from Baseline to 2009-2010.

Cohort I Middle Schools – R/ELA CRCT - % Passing:

	2005-2006	2006-2007	2007-2008	2008-2009	2009-2010	Average Baseline	Percent Change
Bagley MS	58.1%	53.0%	64.6%	71.1%	83.3%	58.6%	24.7%
Bainbridge MS	49.2%	44.9%	43.8%	64.7%	57.8%	46.0%	11.8
Coffee MS	47.9%	46.8%	50.6%	44.4%	57.4%	48.4%	9.0%
Double Churches MS	54.9%	57.6%	60.6%	66.0%	53.0%	57.7%	-4.7%
Gladden MS	61.3%	64.6%	65.1%	60.0%	74.1%	63.7%	10.4%
Harper-Archer MS	30.5%	40.3%	48.0%	48.4%	47.1%	39.6%	7.5%
Henry MS	60.3%	62.3%	51.8%	61.2%	66.7%	58.1%	8.6%
Hutto MS	58.2%	63.5%	44.8%	50.6%	60.2%	55.5%	4.7%
Lanier MS	71.3%	78.0%	77.0%	81.5%	69.6%	75.4%	-5.8%
Lewis Frazier MS	58.0%	58.8%	71.4%	72.8%	50.0%	62.7%	-12.7%
Madison Co MS	67.7%	66.1%	69.4%	74.7%	81.0%	67.7%	13.3%
Manchester MS	54.0%	58.5%	62.2%	65.5%	63.1%	58.2%	4.9%
Midway MS	42.3%	50.0%	59.4%	56.6%	52.7%	50.6%	2.1%

	2005-2006	2006-2007	2007-2008	2008-2009	2009-2010	Average Baseline	Percent Change
Oak Hills MS	57.0%	59.9%	68.6%	63.2%	66.3%	61.8%	4.5%
Rutland MS	54.9%	61.2%	63.2%	63.6%	61.3%	59.8%	1.5%
W.S. Hornsby MS	54.4%	64.5%	41.2%	46.8%	35.9%	53.4%	NA
				Average	61.2%	53.7%	3.9%

Cohort I High Schools - GHS GT LAR % Passing:

School	2005-2006	2006-2007	2007-2008	2008-2009	2009-2010	Average Baseline	Percent Change
Baldwin HS	50.0%	75.0%	53.1%	83.3%	62.7%	59.4%	3.3%
Coffee HS	28.9%	39.1%	42.9%	52.0%	41.0%	37.0%	4.0%
Murray County HS	60.9%	55.8%	39.4%	53.1%	55.8%	52.0%	3.8%
Manchester HS	20.7%	27.8	52.0%	50.0%	52.6%	33.5%	19.1%
Rutland HS	52.6%	66.7%	42.9%	33.3%	50.0%	54.1%	-4.1%
Bainbridge HS		5.6%	37.9%	20.0%	33.3%	14.5%	18.8%
Henry County HS	60.9%	50.0%	54.5%	31.6%	44.0%	55.1%	-11.1%
Liberty County HS	44.8%	48.6%	37.8%	38.3%	55.7%	43.7%	12.0%
Lucey Laney HS	50.0%	18.2%	25.0%	25.0%	33.3%	31.1%	2.2%
Madison Co. HS	85.2%	73.7%	54.8%	54.2%	67.4%	71.2%	-3.8%
North Gwinnett HS	88.9%	76.5%	63.2%	70.8%	68.4%	76.2%	-7.8%
Douglass HS	20.0%	42.9%	38.7%	25.9%	32.0%	33.9%	-1.9%
				Average	44.5%	41.9%	+2.6%

Table 13. Performance Measure 1/2j – Standards in English/Language Arts in Cohort 2 Middle and High Schools – Percent Change from Baseline to 2009-2010.

Cohort 2 Middle Schools – R/ELA CRCT - % Passing:

	2006-2007	2007-2008	2008-2009	2009-2010	Average Baseline	Percent Point Change
Bleckley MS	59.9%	74.5%	78.6%	79.4%	67.2%	12.2%
Brantley County MS	67.5%	60.5%	65.7%	59.7%	64.0%	-4.3%
Burney Harris Lyons MS	52.6%	43.0%	51.9%	61.1%	47.8%	13.3%
Clarke MS	50.9%	60.6%	51.9%	61.0%	55.8%	5.3%
Claxton MS	54.6%	71.6%	76.6%	53.0%	63.1%	-10.1%
Fannin MS	71.1%	76.5%	68.6%	78.4%	73.8%	4.6%
Fort MS	54.5%	46.4%	57.0%	67.5%	50.5%	17.1%
Pierce County MS	73.8%	77.9%	78.5%	84.5%	75.9%	8.7%
Richards MS	68.1%	67.2%	66.0%	71.5%	67.7%	3.8%
Snellville MS	66.4%	68.1%	68.0%	67.2%	67.3%	-0.1%
Sweetwater MS	69.2%	64.5%	62.8%	62.8%	66.9%	-4.1%
Twiggs County MS		42.5%	33.3%	40.9%	42.5%	-1.6%
Upton Lee MS	56.8%	60.4%	65.4%	63.1%	58.6%	4.5%
			Average	60.0%	56.8%	4.1%

Cohort 2 High Schools - GHSGT LAR % Passing:

School	2006-2007	2007-2008	2008-2009	2009-2010	Average Baseline	Percent of Change
Albany HS	5.30%	61.50%	58.30%	42.9%	33.4%	9.5%
Appling County HS	94.1%	67.7%	56.5%	36.4%	80.9%	-44.5%
Berkmar HS	48.1%	51.3%	56.1%	43.1%	49.7%	-6.6%
Bleckley County HS		58.0%	79.0%	56.0%	58.6%	-2.6%
Brantley County HS	45.0%	56.5%	50.0%	60.0%	50.8%	9.3%
Cedar Shoals HS	45.2%	37.9%	40.9%	31.1%	41.6%	-10.5%
Central HS	33.3%	45.5%	30.0%	40.0%	39.4%	0.6%
Central Gwinnett HS	65.0%	66.7%	60.4%	48.9%	65.9%	-17.0%
Charlton County HS	46.7%	63.6%	NA	62.5%	55.2%	7.4%
Chattahoochee County HS	Too Few	58.3%	40.0%	54.5%	58.3%	-3.8%
Clarke Central HS	30.8%	65.5%	48.6%	23.9%	48.2%	-24.3%
Claxton HS	28.6%	80.0%	27.8%	50.0%	54.3%	-4.3%
Cross Creek HS	56.5%	53.3%	41.7%	59.3%	54.9%	4.4%
Dade County HS	46.2%	35.7%	50.0%	47.8%	41.0%	6.8%
Dawson County HS	100.0%	Too Few	79.0%	50.0%	100.0%	-50.0%
Dougherty HS	23.8%	NA	NA	0.0%	23.8%	-23.8%
East Hall HS	Too Few	Too Few	Too Few	64.3%	NA	NA
East Laurens HS	50.0%	36.8%	58.3%	44.8%	43.4%	1.4%
Effingham County HS	75.0%	69.0%	46.4%	61.4%	72.0%	-10.6%
Elbert County Comprehensive HS	55.6%	57.6%	46.2%	58.3%	56.6%	1.7%
Franklin County HS		50.0%	61.9%	40.9%	50.0%	-9.1%
Gilmer County/GCHS	76.9%	84.8%	42.9%	50.0%	80.9%	-30.9%
Glenn Hills HS	31.8%	6.2%	41.2%	39.9%	19.0%	20.9%
Griffin HS	68.4%	78.6%	52.8%	43.6%	73.5%	-29.9%

School	2006-2007	2007-2008	2008-2009	2009-2010	Average Baseline	Percent of Change
Hardaway HS	70.0%	80.0%	57.6%	70.3%	75.0%	-4.7%
Hart County HS	50.0%	35.3%	57.1%	23.1%	42.7%	-19.6%
Howard HS			78.6%	69.2%	78.6%	-9.4%
Jonesboro HS		33.3%	69.6%	73.7%	33.3%	40.4%
Josey Comprehensive HS	21.1%	22.7%	53.3%	47.6%	21.9%	25.7%
Kendrick HS	73.3%	52.6%	60.0%	50.0%	63.0%	-13.0%
Lakeview Fort Oglethorpe HS	65.4%	57.6%	59.0%	48.4%	61.5%	-13.1%
Marietta HS		62.5%	47.1%	53.8%	62.5%	-8.7%
Monroe HS	15.4%	25.0%	50.0%	No Score	20.2%	NA
North Clayton HS		36.4%	50.0%	61.1%	36.4%	24.7%
North Murray HS	55.8%	39.4%	53.1%	55.8%	47.6%	8.2%
Parkview HS	82.2%	71.1%	61.5%	74.4%	76.7%	-2.3%
Pierce County HS	76.9%	75.0%	86.4%	61.5%	76.0%	-14.5%
Pike County HS	75.0%	36.4%	47.1%	37.5%	55.7%	-18.2%
Ringghold HS		56.1%	60.0%	66.7%	56.1%	10.6%
South Gwinnett HS	60.0%	47.7%	60.5%	61.1%	53.9%	7.3%
Stephens County HS	62.5%	71.0%	50.0%	75.0%	66.8%	8.3%
Thomasville HS	36.4%	40.0%	57.1%	57.1%	38.2%	18.9%
Toombs County HS	37.5%	38.1%	33.3%	32.1%	37.8%	-5.7%
Twiggs County HS	Too Few	Too Few	Too Few	Too Few	42.9%	NA
Upson-Lee HS	60.7%	65.4%	68.0%	42.9%	63.1%	-20.2%
West Laurens HS	56.2%	47.1%	42.1%	65.2%	51.7%	13.6%
Wilkinson County HS		44.4%	15.4%	45.5%	44.4%	1.1%
William Henry Spencer HS	33.3%	16.0%	43.3%	40.0%	24.7%	15.4%
			Average	49.4%	53.9%	-3.6%

Table 14. Performance Measure 1/2.k – Standards in Math in Cohort I Middle and High Schools – Percent Change from Baseline to 2009-2010.

Cohort 1 Middle Schools - Math CRCT - % Passing:

	2005-2006	2006-2007	2007-2008	2008-2009	2009-2010	Average Baseline	Percent Change
Bagley MS	36.3%	30.8%	36.4%	57.8%	64.0%	34.5%	29.5%
Bainbridge MS	25.4%	14.3%	26.8%	38.5%	37.3%	22.2%	15.1%
Coffee MS	30.9%	35.9%	34.5%	37.3%	46.6%	33.8%	12.8%
Double Churches MS	31.6%	30.5%	31.8%	24.5%	26.0%	31.3%	-5.3%
Gladden MS	41.3%	41.7%	33.3%	52.0%	58.5%	38.8%	19.7%
Harper-Archer MS	21.2%	21.1%	19.3%	68.1%	34.9%	20.5%	14.4%
Henry MS	47.0%	36.9%	24.6%	31.6%	36.7%	36.2%	0.5%
Hutto MS	37.9%	44.7%	32.8%	27.5%	33.0%	38.5%	-5.5%
Lanier MS	54.4%	60.0%	53.0%	58.3%	47.5%	55.8%	-8.3%
Lewis Frazier MS	33.3%	31.9%	51.5%	56.8%	44.3%	38.9%	5.4%
Madison Co MS	47.2%	40.1%	47.0%	43.2%	56.7%	44.8%	11.9%
Manchester MS	42.6%	40.0%	47.6%	55.6%	52.5%	43.4%	9.1%
Midway MS	31.0%	24.1%	32.4%	39.7%	39.3%	29.2%	10.1%
Oak Hills MS	37.7%	34.5%	43.8%	48.1%	50.9%	38.7%	12.2%
Rutland MS	28.6%	34.4%	43.5%	42.9%	34.5%	35.5%	-1.0%
W.S. Hornsby MS	32.7%	38.3%	22.0%	25.6%	12.8%	31.0%	-18.2%
				Average	35.1%	30.3%	7.6%

Cohort I High Schools – GHSGT Math % Passing:

School	2005-2006	2006-2007	2007-2008	2008-2009	2009-2010	Average Baseline	Percent Change
Baldwin HS	25.6%	28.6%	28.1%	66.7%	27.1%	27.4%	-0.3%
Coffee HS	23.7%	23.9%	19.0%	44.0%	28.9%	22.2%	6.7%
Murray Co HS	28.3%	17.1%	18.2%	25.0%	21.4%	21.2%	0.2%
Manchester HS	17.2%	27.8%	28.0%	35.0%	25.0%	24.3%	0.7%
Rutland HS	22.2%	40.0%	7.1%	26.7%	27.3%	23.1%	4.2%
Bainbridge HS		22.2%	51.7%	35.0%	25.5%	24.3%	0.7%
Henry County HS	21.7%	12.5%	25.0%	15.8%	8.0%	19.7%	-11.7%
Liberty County HS	24.1%	27.0%	32.4%	20.8%	32.3%	27.8%	4.5%
Lucey Laney HS	41.7%	9.1%	25.0%	8.3%	14.3%	25.3%	-11.0%
Madison Co HS	63.0%	47.4%	45.2%	39.1%	50.0%	51.9%	-1.9%
North Gwinnett HS	55.6%	50.0%	41.0%	52.1%	41.4%	48.9%	-7.5%
Douglass HS	10.0%	10.7%	12.5%	18.5%	24.0%	11.1%	12.9%
				Average	31.1%	28.9%	+2.2%

Table 15. Performance Measure 1/2.k – Standards in Math in Cohort 2 Middle and High Schools – Percent Change from Baseline to 2009-2010.

Cohort 2 Middle Schools - Math CRCT - % Passing:

	2006-2007	2007-2008	2008-2009	2009-2010	Average Baseline	Percent Change
Bleckley MS	43.2%	45.2%	60.0%	52.1%	44.2%	7.9%
Brantley County MS	45.0%	44.2%	47.1%	61.1%	44.6%	16.5%
Burney Harris Lyons MS	30.9%	26.9%	25.3%	38.4%	28.9%	9.5%
Clarke MS	33.6%	42.9%	47.8%	54.9%	38.3%	16.7%
Claxton MS	43.3%	45.1%	46.9%	36.4%	44.2%	-7.8%
Fannin MS	33.9%	48.0%	41.2%	57.7%	41.0%	16.8%
Fort MS	25.8%	20.0%	34.0%	40.0%	22.9%	17.1%
Pierce County MS	63.4%	65.7%	76.4%	74.3%	64.6%	9.8%
Richards MS	45.4%	52.3%	53.0%	59.2%	48.9%	10.4%
Snellville MS	42.7%	41.8%	45.0%	42.8%	42.3%	0.6%
Sweetwater MS	40.0%	42.0%	45.2%	44.5%	41.0%	3.5%
Twiggs County MS		24.1%	19.6%	31.8%	24.1%	7.7%
Upton Lee MS	25.9%	33.5%	40.7%	40.5%	29.7%	10.8%
			Average	48.7%	39.6%	9.2%

Cohort 2 High Schools – GHSGT Math % Passing:

School	2006-2007	2007-2008	2008-2009	2009-2010	Average Baseline	Percent of Change
Albany HS	5.30%	61.50%	58.30%	42.9%	33.4%	9.5%
Appling County HS	94.1%	67.7%	56.5%	36.4%	80.9%	-44.5%
Berkmar HS	48.1%	51.3%	56.1%	43.1%	49.7%	-6.6%
Bleckley County HS		58.0%	79.0%	56.0%	58.6%	-2.6%
Brantley County HS	45.0%	56.5%	50.0%	60.0%	50.8%	9.3%
Cedar Shoals HS	45.2%	37.9%	40.9%	31.1%	41.6%	-10.5%
Central HS	33.3%	45.5%	30.0%	40.0%	39.4%	0.6%
Central Gwinnett HS	65.0%	66.7%	60.4%	48.9%	65.9%	-17.0%
Charlton County HS	46.7%	63.6%	NA	62.5%	55.2%	7.4%
Chattahoochee County HS	Too Few	58.3%	40.0%	54.5%	58.3%	-3.8%
Clarke Central HS	30.8%	65.5%	48.6%	23.9%	48.2%	-24.3%
Claxton HS	28.6%	80.0%	27.8%	50.0%	54.3%	-4.3%
Cross Creek HS	56.5%	53.3%	41.7%	59.3%	54.9%	4.4%
ade County HS	46.2%	35.7%	50.0%	47.8%	41.0%	6.8%
Dawson County HS	100.0%	Too Few	79.0%	50.0%	100.0%	-50.0%
Dougherty HS	23.8%	NA	NA	0.0%	23.8%	-23.8%
East Hall HS	Too Few	Too Few	Too Few	49.9	NA	NA
East Laurens HS	50.0%	36.8%	58.3%	44.8%	43.4%	1.4%
Effingham County HS	75.0%	69.0%	46.4%	61.4%	72.0%	-10.6%
Elbert County Comprehensive HS	55.6%	57.6%	46.2%	58.3%	56.6%	1.7%
Franklin County HS		50.0%	61.9%	40.9%	50.0%	-9.1%
Gilmer County/GCHS	76.9%	84.8%	42.9%	50.0%	80.9%	-30.9%
Glenn Hills HS	31.8%	6.2%	41.2%	39.9%	19.0%	20.9%
Griffin HS	68.4%	78.6%	52.8%	43.6%	73.5%	-29.9%

School	2006-2007	2007-2008	2008-2009	2009-2010	Average Baseline	Percent of Change
Hardaway HS	70.0%	80.0%	57.6%	70.3%	75.0%	-4.7%
Hart County HS	50.0%	35.3%	57.1%	23.1%	42.7%	-19.6%
Howard HS			78.6%	69.2%	78.6%	-9.4%
Jonesboro HS		33.3%	69.6%	73.7%	33.3%	40.4%
T.W. Josey Comprehensive HS	21.1%	22.7%	53.3%	47.6%	21.9%	25.7%
Kendrick HS	73.3%	52.6%	60.0%	50.0%	63.0%	-13.0%
Lakeview Fort Oglethorpe HS	65.4%	57.6%	59.0%	48.4%	61.5%	-13.1%
Marietta HS		62.5%	47.1%	53.8%	62.5%	-8.7%
Monroe HS	23.1%	6.2%	25.0%	20.0%	14.7%	5.4%
North Clayton HS		36.4%	50.0%	61.1%	36.4%	24.7%
North Murray HS	55.8%	39.4%	53.1%	55.8%	47.6%	8.2%
Parkview HS	82.2%	71.1%	61.5%	74.4%	76.7%	-2.3%
Pierce County HS	76.9%	75.0%	86.4%	61.5%	76.0%	-14.5%
Pike County HS	75.0%	36.4%	47.1%	37.5%	55.7%	-18.2%
Ringghold HS		56.1%	60.0%	66.7%	56.1%	10.6%
South Gwinnett HS	60.0%	47.7%	60.5%	61.1%	53.9%	7.3%
Stephens County HS	62.5%	71.0%	50.0%	75.0%	66.8%	8.3%
Thomasville HS	36.4%	40.0%	57.1%	57.1%	38.2%	18.9%
Toombs County HS	37.5%	38.1%	33.3%	32.1%	37.8%	-5.7%
Twiggs County HS	Too Few	Too Few	Too Few	42.9%	NA	NA
Upson-Lee HS	60.7%	65.4%	68.0%	42.9%	63.1%	-20.2%
West Laurens HS	56.2%	47.1%	42.1%	65.2%	51.7%	13.6%
Wilkinson County HS		44.4%	15.4%	45.5%	44.4%	1.1%
William Henry Spencer HS	33.3%	16.0%	43.3%	40.0%	24.7%	15.4%
			Average	29.8%	35.4%	-5.5%

Table 16. Summary of Implementation Progress – Cohort 1 and Cohort 2 Schools

Probe Indicator	Cohort 1 – Second Year of Implementation in 2009-2010						Cohort 2 – First Year of Implementation in 2009-2010					
	Middle Schools N=16			High Schools N=12			Middle Schools – N=13			High Schools N=48		
	Change From Baseline to 2009-2010						Change From Baseline to 2009-2010					
	High % Point Change	Low % Point Change	Average % Point Change	High % Rate Change	Low % Rate Change	Average % Rate Change	High % Point Change	Low % Point Change	Average % Point Change	High % Rate Change	Low % Rate Change	Average % Rate Change
GHSCTLAR	+24.7	-17.5	+3.9	+19.1	-11.1	+2.6	+17.1	- -10.1	+4.1	+40.4 n=45	-50.0 n=45	-3.6 n=45
GHSGT Math	+29.5	-18.2	+7.6	+12.9	-11.7	+2.2	+16.8	-7.8	+9.2	+26.7 n=46	-53.4 n=46	-5.5 n=46
Absent 15+ Days	+11.9	-22.6	-2.9	+11.1	-15.9	-1.6	+13.9	-10.6	-0.2	+15.6	-11.3	+2.0
Graduation Rate - All	NA	NA	NA	+24.9	-6.0	+10.2	NA	NA	NA	+41.6 n=47	-4.9 n=47	+9.5 n=47
Graduation Rate – SWD	NA	NA	NA	+23.1	-4.8%	+9.8	NA	NA	NA	+43.1 n=45	-17.8 n=45	+8.8 n=45
Dropout Rate – All	NA	NA	NA	+2.5 n=11	-8.2 n=11	-2.0 n=11	NA	NA	NA	+4.4	-50.0	-1.9
Dropout Rate -SWD	NA	NA	NA	2.1	-7.5	-2.5	NA	NA	NA	+8.0	-8.9	-0.9

Table 16. Graduate First Professional Development/Trainings – Year 4.

Data of Training	Name of Training	# of Participants
8-25-10	Planet Literacy Training	26
2/1/2011 and 3/1-2011	Influencer Training	15
9/20/2010 and 9/21-2010	GraduateFIRST Institute	300
10/1/2010	Webinar – Affective Engagement	23
10/1/2010	Webinar - Behavior Engagement	15
10/7/2011	Webinar – Cognitive Engagement	17
9/30/2010	Webinar – Instructional Strategies	29
10/19/2010	Navigating the GraduateFIRST website	25
	8 Trainings Total	450

Table 17. GraduateFirst Math Professional Development/Trainings – Year 4.

Date of Training	Name of Training	# of Participants
10/1/2010	Webinar – Instructional Strategies – Math	18
10/12/2010	Metro Math Training	25
10/14/2010	Success in GPS Math	14
10/26/2010	Central Georgia Tech Math Training	40
10/28/2010	Athens High School Math	32
11/4/2010	Middle School Math Content	51

Date of Training	Name of Training	# of Participants
1/5/2011	SPDG Math Training	8
1/19/2011	SPDG Math Training	24
1/20/2011	SPDG Math Training	23
1/20/2011	SPDG Math Training	16
2/14/2011	Math Training – Part 2	35
3/3/2011	Follow-up Webinar - Math	22
	12 Trainings Total	308

Table 18. ASPIRE-Student-Led IEP Professional Development/Trainings – Year 4.

Data of Training	Name of Training	# of Participants
9/14/2010	ASPIRE Introduction to Student-Led IEPs	11
9/23/2010	ASPIRE Introduction to Student-Led IEPs	12
9/37/3010	ASPIRE Introduction to Student-Led IEPs	2
10/4/2010	ASPIRE Introduction to Student-Led IEPs	2
10/14/2010	ASPIRE Introduction to Student-Led IEPs	2
10/11/2010	4-Hour Training: Student-Led IEPs	6
10/13/2010	4-Hour Training: Student-Led IEPs	10
10/19/2010	4-Hour Training: Student-Led IEPs	19
10/27/2010	4-Hour Training: Student-Led IEPs	14
10/28/2010	4-Hour Training: Student-Led IEPs	9
	10 Trainings Total	87

Table 19. Transition Planning Professional Development/Trainings – Year 4.

Date of Training	Name of Training	# of Participants
12/10/2010	Secrets to Transition Plan Writing: Barrow County	15
1/6/2011	Transition Plan Training: Carroll Co.	29
1/28/2011	Transition Plan Training: Towns County	34
1/27/2011	Transition Plan Training: Union County	37
2/7/2011	Transition Plan Training: Dade County	28
8/31/2010	Webinar – Adult Services	87
1/20/2011	Webinar – Vocational Rehabilitation	67
	7 Trainings Total	297

Table 20 – Induction Trainings Professional Development/Trainings – Year 4.

Date of Training	Name of Training	# of Participants
6/16/2010	Site Administrators Webinar: Hiring Induction Coaches	3
7/22/2010	Site Administrators Webinar: Overview, Roles and Responsibilities, Formative Assessment vs. Evaluation	4
7/27-29/2010	Induction Coach Institute: Induction Framework, Adult learning, Induction Coach Roles, Rapport and Trust Strategies, Clarifying and Mediating Questions, Planning and Reflecting Conversations	9

Date of Training	Name of Training	# of Participants
7/28/2010	Induction Coach Institute: Induction Framework, Adult learning, Induction Coach Roles, Rapport and Trust Strategies, Clarifying and Mediating Questions, Planning and Reflecting Conversations	10
7/29/2010	Induction Coach Institute: Induction Framework, Adult learning, Induction Coach Roles, Rapport and Trust Strategies, Clarifying and Mediating Questions, Planning and Reflecting Conversations	9
8/11/2010	IC Training Webinar: Electronic Resources	13
8/24/2010	IC Training Webinar: Site Visits	10
9/7/2010	IC Training Webinar: IEPs	7
9/21/2010	IC Training Webinar: Contact Logs	10
10/13/2010	IC Training Webinar: Professional Growth Plans, Purposes of Different Types of Assessment	7
10/22/2010	New Special Education Teacher & Induction Coach Professional Development: Present Levels, SMART Goals, Progress Monitoring, Feedback, CLASS Keys, Professional Growth Plans (all day)	30
11/10/2010	IC Training Webinar: Data Collection and Reflection	6
11/30/2010	IC Training Webinar: Preparing to Facilitate the Dec. 7th Professional Learning for Beginning Teachers	6

Date of Training	Name of Training	# of Participants
12/7/2010	New Teacher Webinar: Math Strategies and Assistive Technology for Students with Disabilities (3 hours)	27
1/26-27/2011	Induction Coach Professional Development: Revisiting Program Goals to Assess Progress; Prioritizing Next Steps (two half days)	9
1/28/2011	New Special Education Teacher & Induction Coach Professional Development: Differentiation, Behavior Management, Helping Students with Disabilities Make AYP (all day)	30
3/1/2011	New Teacher Webinar: Reading Strategies and Assistive Technology for Students with Disabilities (3 hours)	25
	17 Trainings Total	215

Table 21 – Parent Engagement Trainings Professional Development/Trainings – Year 4.

Date of Training	Name of Training	# of Participants
4/7/2010	Family 360 Elluminate webinar	520
5/5/2010	Family 360 Elluminate Webinar	504
5/7/2010	P2P – Family Support Trng - PS	30
5/7/2010	P2P Family Support Trng – DC / PATH	30
6/21/2010	Autism Conference – Keynote on Transition for students w/Autism	140
6/21/2010	Led Parent Panel – Raising a Student w/Autism who is receiving a Regular diploma or other secondary options	140
7/38/2010	Family Engagement Training on partnering on graduation- 2 hour Keynote	25
7/28/2010	Family Engagement Breakout on communicating with families when planning	350
8/302010	PMP Leadership Council Retreat	28
8/30/2010	PMP Leadership Council Retreat	33
8/31/2010	PMP Leadership Council Retreat	21

Date of Training	Name of Training	# of Participants
10/12/2010	PIMP Annual Kick-Off Meeting – Pre Sessions	15
10/13 – 14/2010	PMP Annual Kick-Off Meeting	185
10/25/2011	Barrow 360 Team Pilot All Day Trng on Creating Sustainable FE plans around graduation and dropout	10
10/30/2010	Dream Day @ Marietta City Schools	10
11/4/2010	Illuminate on Data	25
11/18/2010	Camden 360 Team Pilot All Day Trng on Creating Sustainable FE plans around graduation and dropout	20
11/19/2010	Walton 360 Team Pilot All Day Trng on Creating Sustainable FE plans around graduation and dropout	60
12/1/2010	Family 360 Illuminate	400
1/19-20/2011	GaPMP North University Trng	24
1/27/2011	PATH for KSU Students	25
1/28/2011	Family Engagement for targeted at-Risk Students with Fulton County Schools Administrators	120

Date of Training	Name of Training	# of Participants
2/16-17/2011	GaPMP South University Trng	55
2/24/2010	Forsyth Transition Fair & Training – Family Involvement & Transition	25
2/27/2011	GA CEC Conference -How to Engage Families to Better Understand the Transition Maze	50
3/8/2011	Communities of Practice II Conference Transition Panel	320
3/21- 23/2011	DOE Leadership Conference	540
12/14/2010	Mini Cafe Facilitator Trng	18
	28 Trainings Total	3723

Objective 4.1 – Decrease in the number of special education teachers holding a non-regular certificate.

Objective 4.2 – Aggressive recruitment of fully certified/ qualified special education teachers.

Figure 1 – Two-Year Retention Rate of New Special Education Teachers.

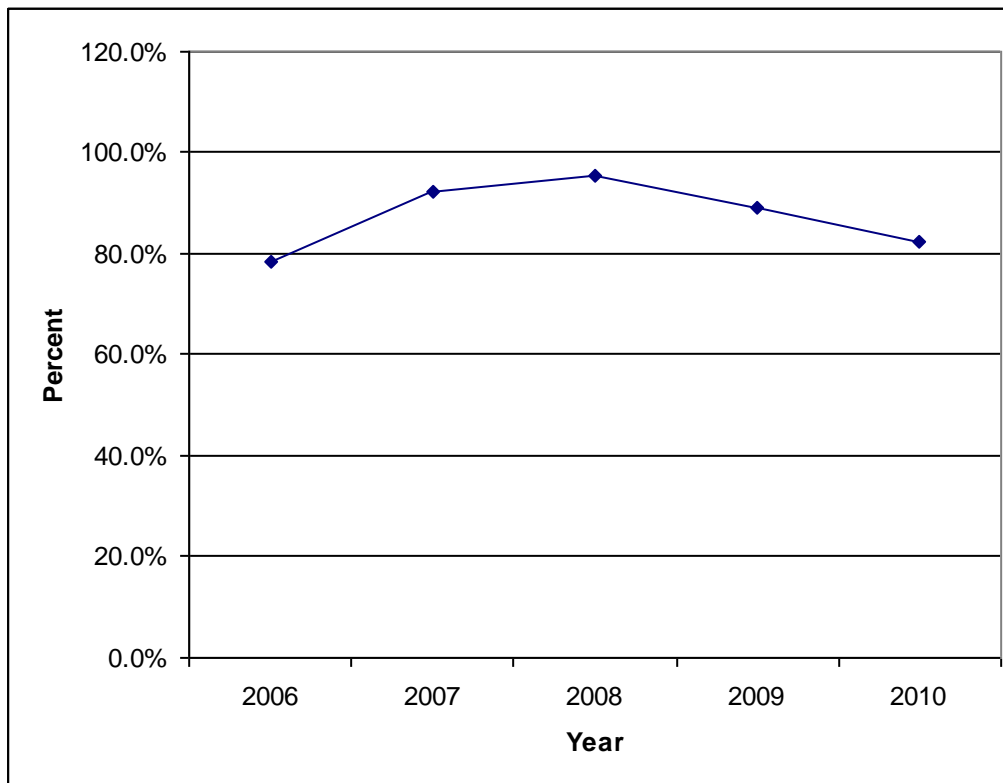
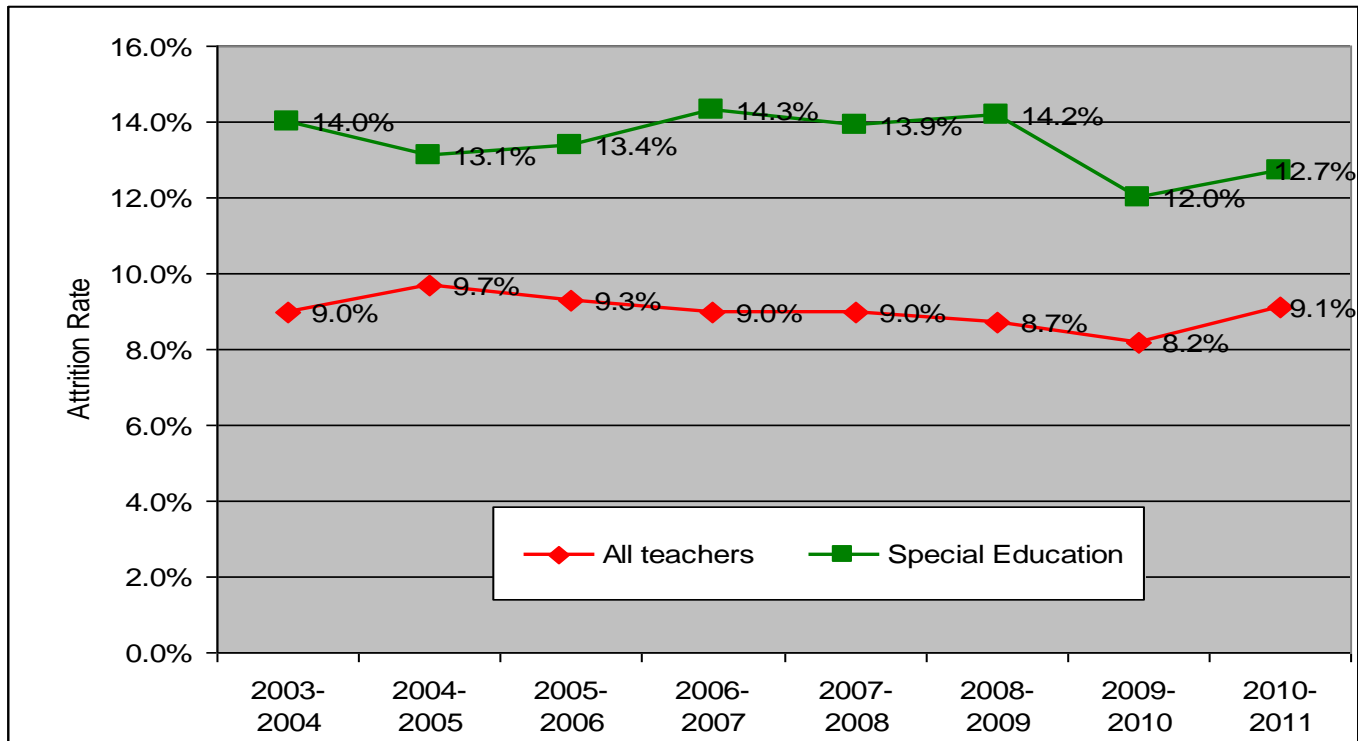


Figure 2. 1-Year Attrition Rate of Novice Special Education Teachers and All Teachers from 2004-20.



Year	Special Education Teachers		All Teachers	
	Attrition	Retention	Attrition	Retention
2003-2004	14.9%	85.1%	9.0%	91.0%
2004-2005	13.1%	86.9%	9.7%	90.3%
2005-2006	13.4%	86.6%	9.3%	90.7%

Year	Special Education Teachers		All Teachers	
	Attrition	Retention	Attrition	Retention
2006-2007	14.3%	85.7%	9.0%	91.0%
2007-2008	13.9%	86.1%	9.0%	91.0%
2008-2009	14.2%	85.8%	8.7%	91.3%
2009-2010	12.0%	88.0%	8.2%	91.8%
2010-2011	12.7%	87.3%	9.1%	90.9%

Figure 3. Attrition of Special and General Education Teachers in Georgia After One, Three, and Five Years from FY 2000 to FY 2010.

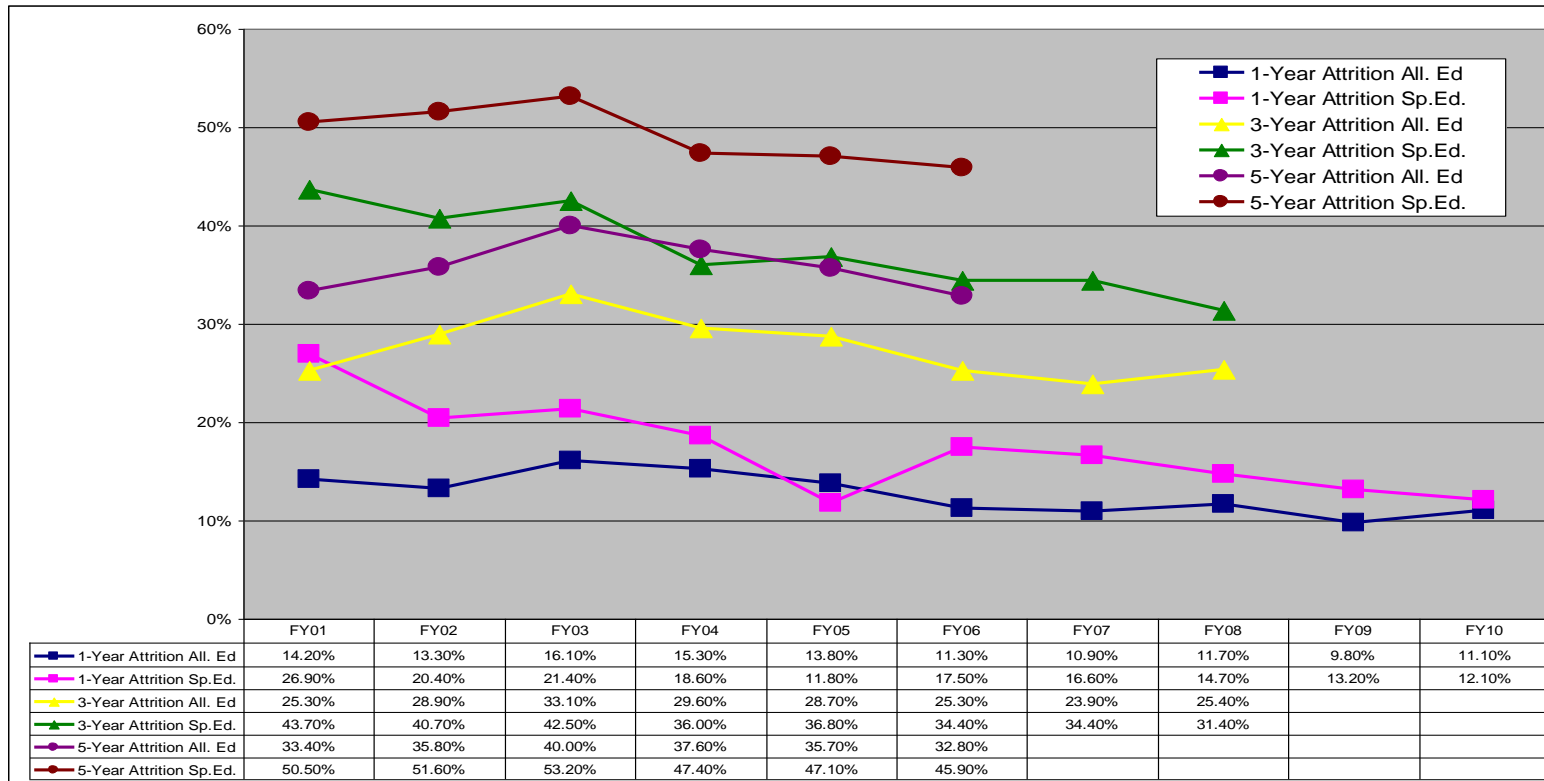


Table 12. Induction Coach Activity Analysis from August, 2010 – February 2011.

ACTIVITY/HOURS	AUG[*]	SEPT	OCT^{**}	NOV^{***}	DEC	JAN	FEB	TOTAL	AVERAGE
Preparation Time	21.75	23	41.5	22.5	19	21	33.88	182.63	26.09
Pre-/Post Conferences	38.65	50.3	29.8	22.6	20.5	22.75	27	211.6	30.23
Observations	73.5	167.25	123.75	105	84.3	107	155	815.8	116.54
Cognitive Coaching	1	1.25	6.5	12.25	6	10.95	17.5	55.45	7.92
Collaboration	62.25	45.5	47.5	51.75	54.5	49.7	59	370.2	52.89
Professional Development	55.95	39.25	67	14.75	78	92.2	6.75	353.9	50.56
Other	0.8	0	5.5	13.75	0	0	2	22.05	3.15
* One school system (4 teachers) did not start school until late August.									
** One coach (2 teachers) resigned at the beginning of October and was not replaced until December.									
*** November and December are short school months, which skews the data.									
AVERAGE PER TEACHER	AUG[*]	SEPT	OCT^{**}	NOV^{***}	DEC	JAN	FEB	TOTAL	AVERAGE
Preparation Time	1.4	1.2	2.2	1.3	1	1.1	1.8	10	1.43
Pre-/Post Conferences	1.4	1.2	2.2	1.3	1	1.1	1.8	10	1.43
Observations	1.4	1.2	2.2	1.3	1	1.1	1.8	10	1.43
Cognitive Coaching	1.4	1.2	2.2	1.3	1	1.1	1.8	10	1.43
Collaboration	1.4	1.2	2.2	1.3	1	1.1	1.8	10	1.43
Professional Development	1.4	1.2	2.2	1.3	1	1.1	1.8	10	1.43
Other	1.4	1.2	2.2	1.3	1	1.1	1.8	10	1.43